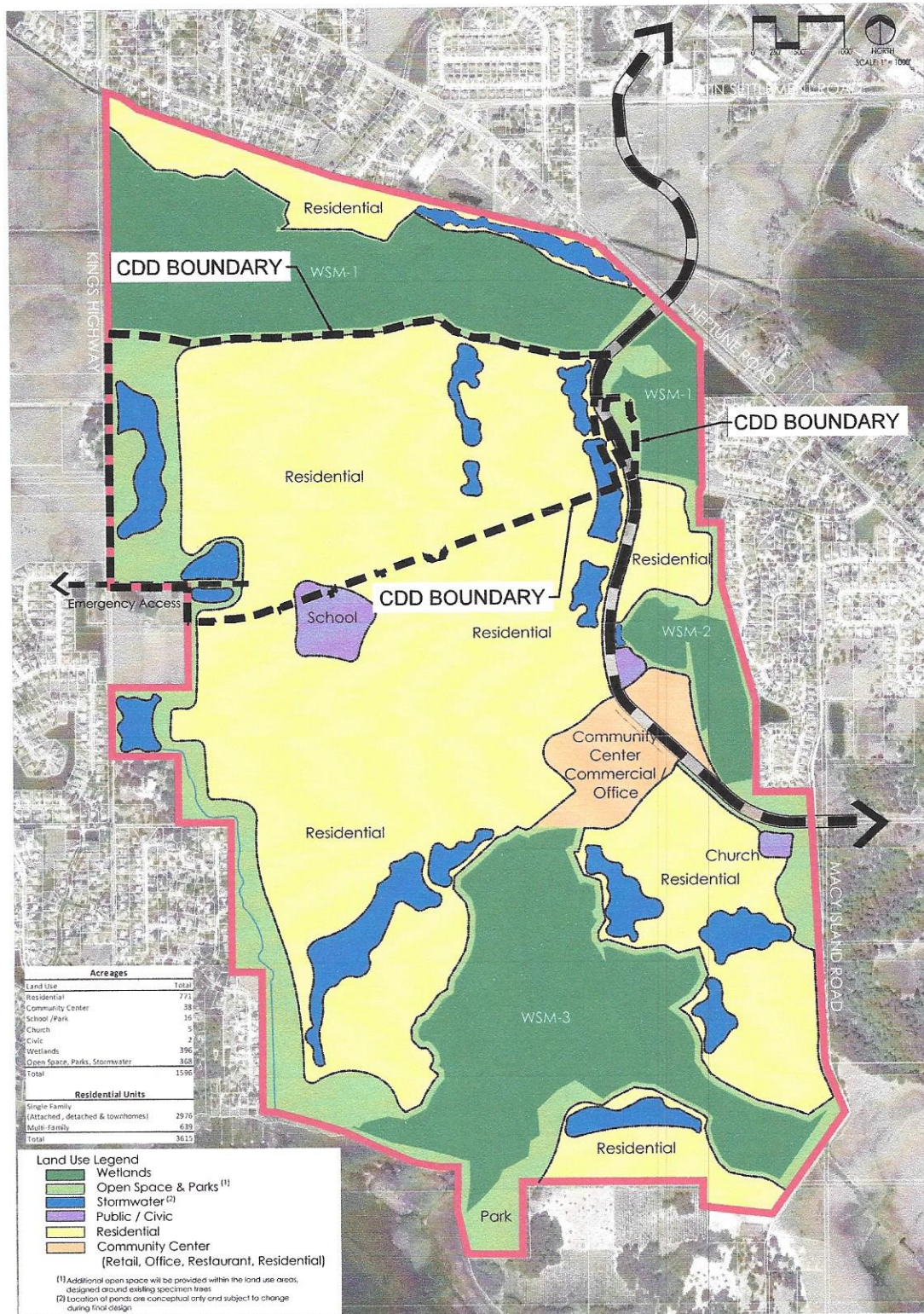


Plotted: December 30, 2015, 3:08:46 PM
 Z:\PROJECTS\1007.006 Kindred - CDD Establishment\Plans\CH\KINDRED CDD MASTER UTILITY.dwg



Acreages	
Land Use	Total
Residential	771
Community Center	38
School / Park	16
Church	5
Civic	2
Wetlands	396
Open Space, Parks, Stormwater	858
Total	1596
Residential Units	
Single Family	2976
(Attached, detached & townhomes)	632
Multi-Family	3615
Total	3615

Land Use Legend

- Wetlands
- Open Space & Parks ⁽¹⁾
- Stormwater ⁽²⁾
- Public / Civic
- Residential
- Community Center (Retail, Office, Restaurant, Residential)

(1) Additional open space will be provided within the land use areas, designed around existing specimen trees.
 (2) Location of ponds are conceptual only and subject to change during final design.

Prepared for:
DR HORTON
 5550 T.G. Lee Boulevard, Suite 600
 Orlando, Florida 32822
 Phone: (407) 850-5240

Map H
Toho Preserve
 Revised August 6, 2012
 Osceola County, Florida

BOYD CIVIL
 ENGINEERING
6325 Hugging Stone Road
 Orlando, Florida 32837
 Office: 407.454.0233

BOYD CIVIL
 ENGINEERING
6325 Hugging Stone Road
 Orlando, FL 32837
 407.454.0233

0' 450' 900' 1800'
 SCALE: 1"=1800'
 DATE: 12/30/15
 PROJECT NO.: 1007.009

KINDRED PHASE 1
 OSCEOLA COUNTY, FLORIDA
 PREPARED FOR: OSCEOLA COUNTY

MASTER PLAN